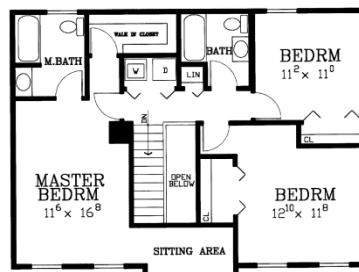
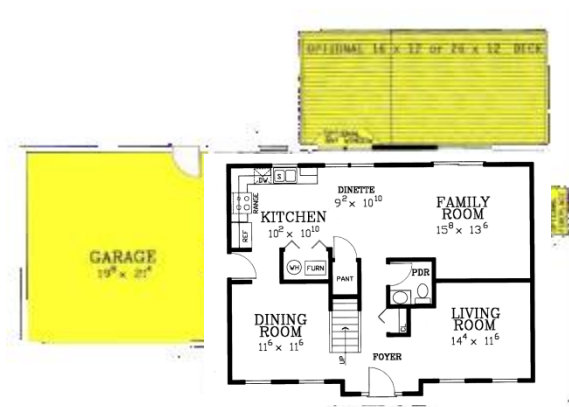


# Bridgeville

**84** Affordable  
**HOMES**

- 176.52 m<sup>2</sup>
- 3 bedrooms
- 2 1/2 baths



## Optional Enhancements

- ◆ Two car garage
- ◆ Rear deck with railing
- ◆ angle bay window
- ◆ 4 bedroom option
- ◆ Fireplace



## Specifications

Living Area:	176.52 m <sup>2</sup>
House width:	10.97 m
House depth:	7.93 m
Number of stories:	2
Primary roof pitch:	6:12
Roof framing:	Truss
Deck:	17.83 m <sup>2</sup>
Optional deck:	29.64 m <sup>2</sup>
Optional Garage:	40.88 m <sup>2</sup>
Main ceiling height:	2.44 m

